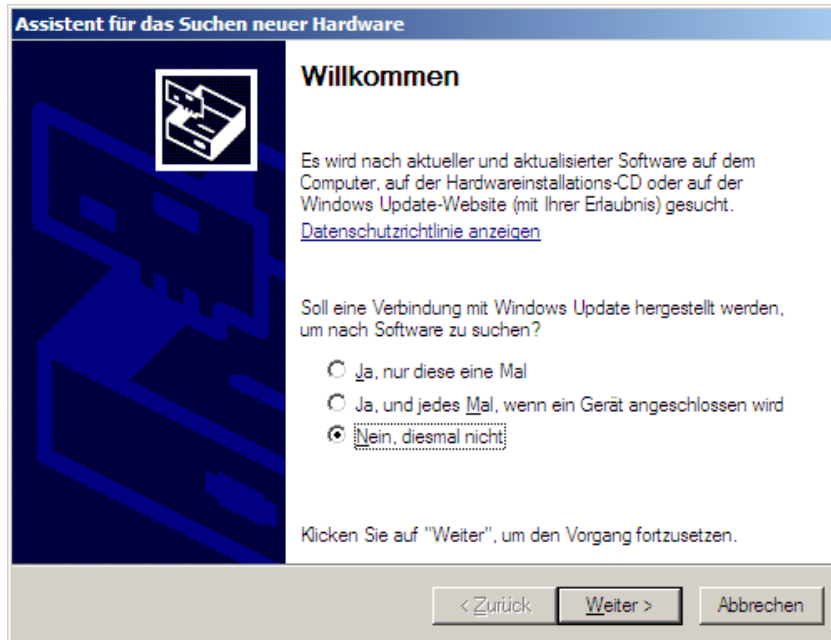


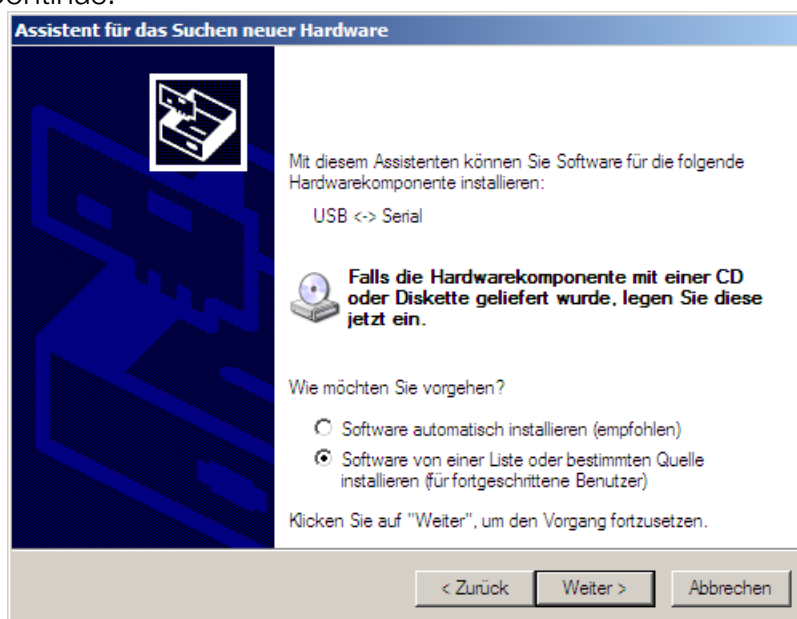
# Driver Installation

To use the programming adapter for the e.flag it is necessary to install two drivers beforehand. The required files can be downloaded with the software used for designing motives for the e-flag on [www.am-event.com](http://www.am-event.com).

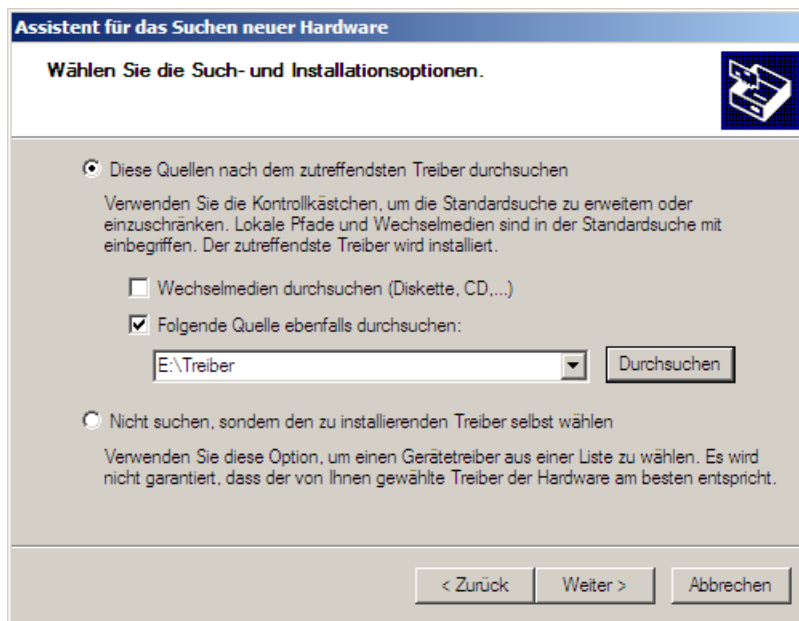
1. Connect the programming adapter to your PC.
2. Wait for the following window to appear:



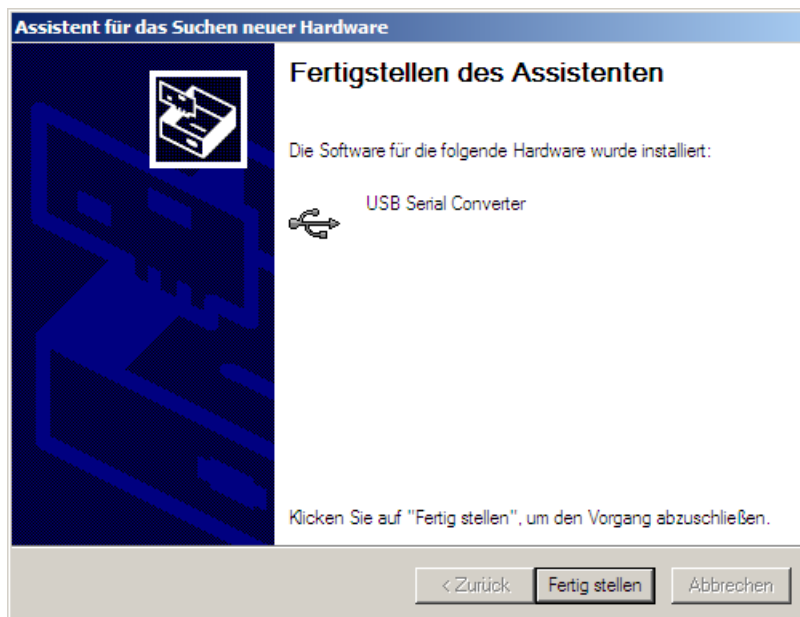
3. Choose the option „No, not this time“ and click Continue.
4. Now choose the option „install software from a list or certain sources“ and click Continue.



5. Now choose „also browse these sources“ and choose the folder „...\\e.flag\drivers“. You have already downloaded the required files in this folder with the software for the e-flag. Click Continue.



6. Windows is now installing the driver. Finally, the following window is displayed.

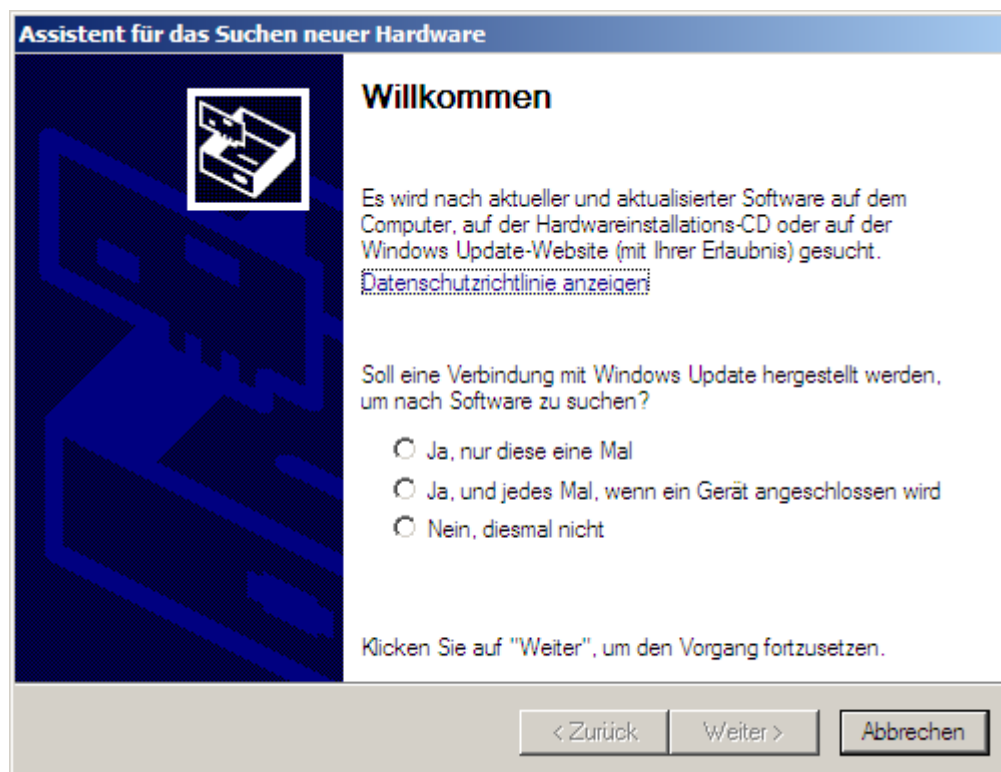


7. Click Finish to complete the installation of the driver.

8. If you are installing the driver for the first time please continue with step 9. At second installation only the following window will appear. Press "Continue installation"



9. Now wait for another window as shown below to pop up and repeat steps 1-7



10. Now both drivers are installed successfully and you can use your programming adapter.